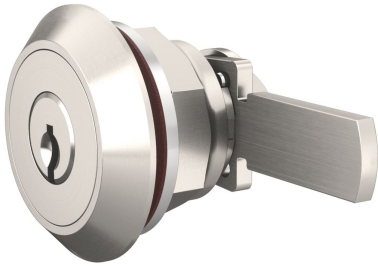


# Camlock Cylinder

## BMZ 1031G / 1061G



### Application:

High-security camlocks to suit a wide variety of glass doors, from 5mm to 7mm in thickness, providing high levels of physical security combined with market-leading key control procedures.

dormakabas' camlock range includes single and two key entry versions, multiple opening/closing paths, as well as offering a selection of optional cam designs and installation accessories.

### Specification:

- Housing supplied in solid natural brass with nickel plating
- Stainless steel cam
- Nickel-plated brass hex fastening nut
- Reversible key made from nickel silver
- Type 1031G - Key retraction when locked only, key rotation 90°
- Type 1061G - Key retraction when locked and opened, key rotation 360°

### Included with the cylinder:

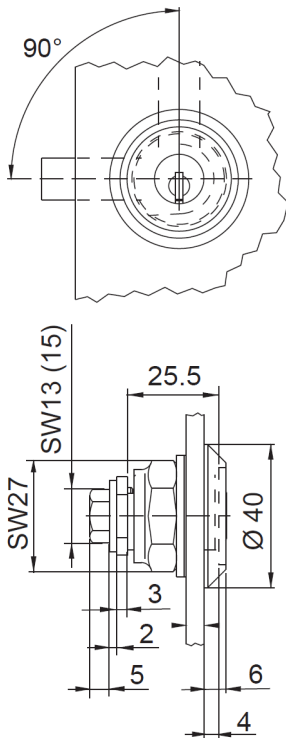
- Standard cam 1061-6ZK (other configurations available - see Camlock accessories document PDS-036-01)
- 1 Rosette (1031-29)
- Lock Washer (1031-23B)
- Threaded Sleeve - 1031-16A
- Installation and Maintenance Instructions

### Available Patented Systems:

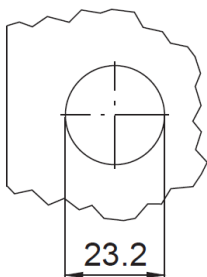
- Kaba 20 (K37)
- quattro Plus (K85)
- expert Plus (K83)

### Available Legacy Systems:

- Kaba 20 (K23)
- quattro Plus (K58)
- expert (K56)



### Installation Hole



dormakaba UK & Ireland  
Lower Moor Way  
Tiverton  
Devon  
EX16 6SS

T: +44 (0)870 000 5625  
E: [info.gb@dormakaba.com](mailto:info.gb@dormakaba.com)

[www.dormakaba.co.uk](http://www.dormakaba.co.uk)